

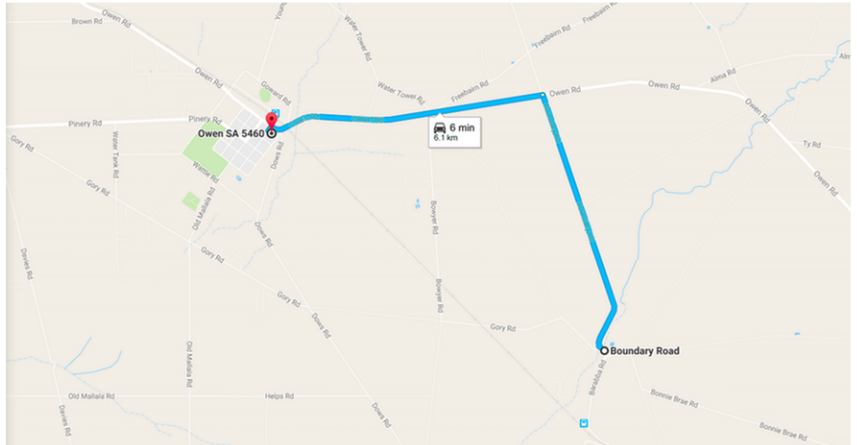
FIELD DEMONSTRATIONS

10AM TUESDAY 11TH APRIL

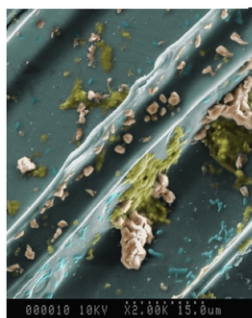
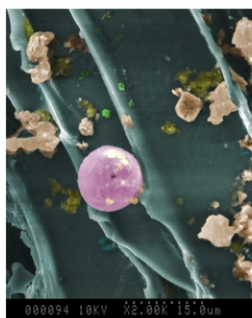
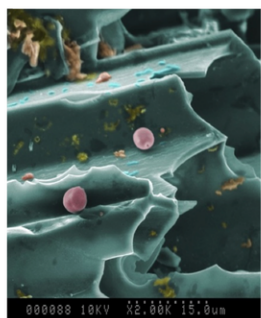
Bartleville (Marshman Farm)

From Owen, head 3km East on Owen Road.

Turn South onto Boundary Road for 3 km.



Ultra-High-Pressure Liquid Coulter



Biochar and
nitrogen management



Natural Resources
Northern and Yorke

More Information:
www.santfa.com.au
Twitter @SANOtill

Greg Butler, 0427 424 278
Callum March, 0429 657 585
Alec Bowyer, 0458 270 894