

APPLIED PA IN THE UPPER NORTH



Joe Koch

2015 Annual SANTFA Conference

Background



Farms at Booleroo &
Georgetown

1800ha (1400ha Cropping)

Cropping – Wheat, Barley,
Canola, Peas, Beans, Vetch

Livestock – 1100 Self
Replacing Merino Ewes



Background



No-Till Since 2010

Cropping enterprise: 4 fold
since 2006

Incorporation of PA since 2008
Auto Steer, Section Control,
Em38, Variable Rate P & N , In
Crop Sensing



'An Aerial Perspective'

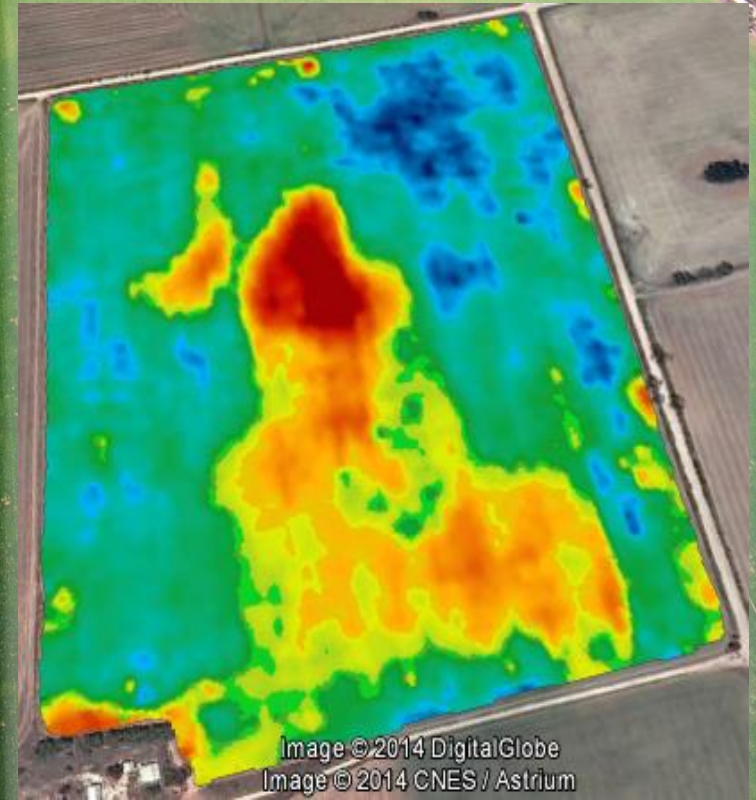


'An Aerial Perspective'

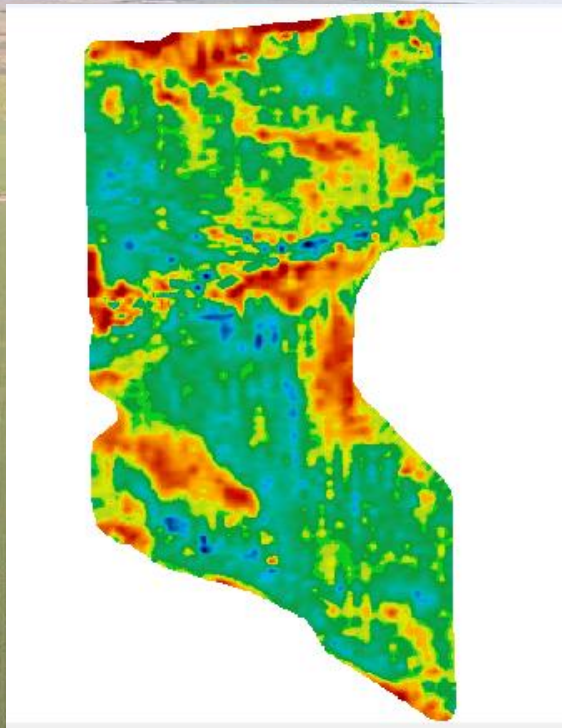
Rhizoctonia patches

Predicta B Tests
revealed Medium
risk on row, high risk
between

Shows soil type
Change



'An Aerial Perspective'

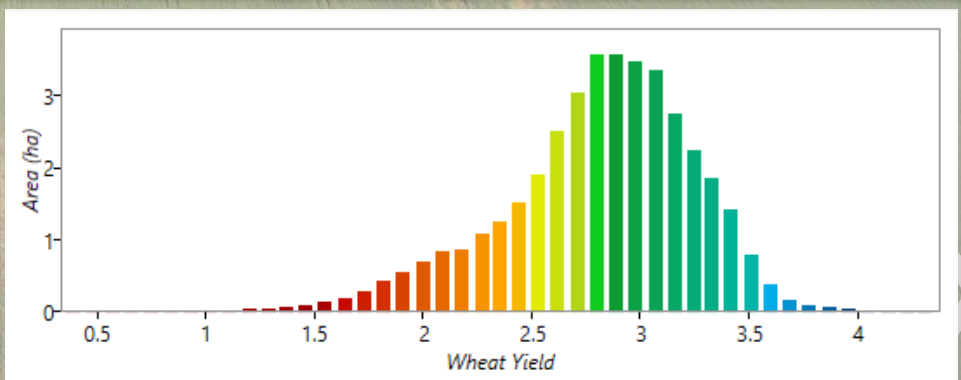


Wheat 2014

Paddock Average 2.85 t/ha

Limestone Rise 2.2 t/ha

Clay Loam Gully 3.2 t/ha



'An Aerial Perspective'

Identification and estimation
of snail damage in Canola



'An Aerial Perspective'

Crown Rot Patches



'An Aerial Perspective'



Differences in crop maturity

2015 Annual SANTFA Conference



'An Aerial Perspective'



Keeping an eye on chopper
spread width



Key Points

Aerial Views of the paddock add a whole new perspective to crop monitoring

Another tool to help with crop management decisions

Helped define crop production Zones



Thankyou

