

Barley Variety Update

2016 Annual SANTFA Conference





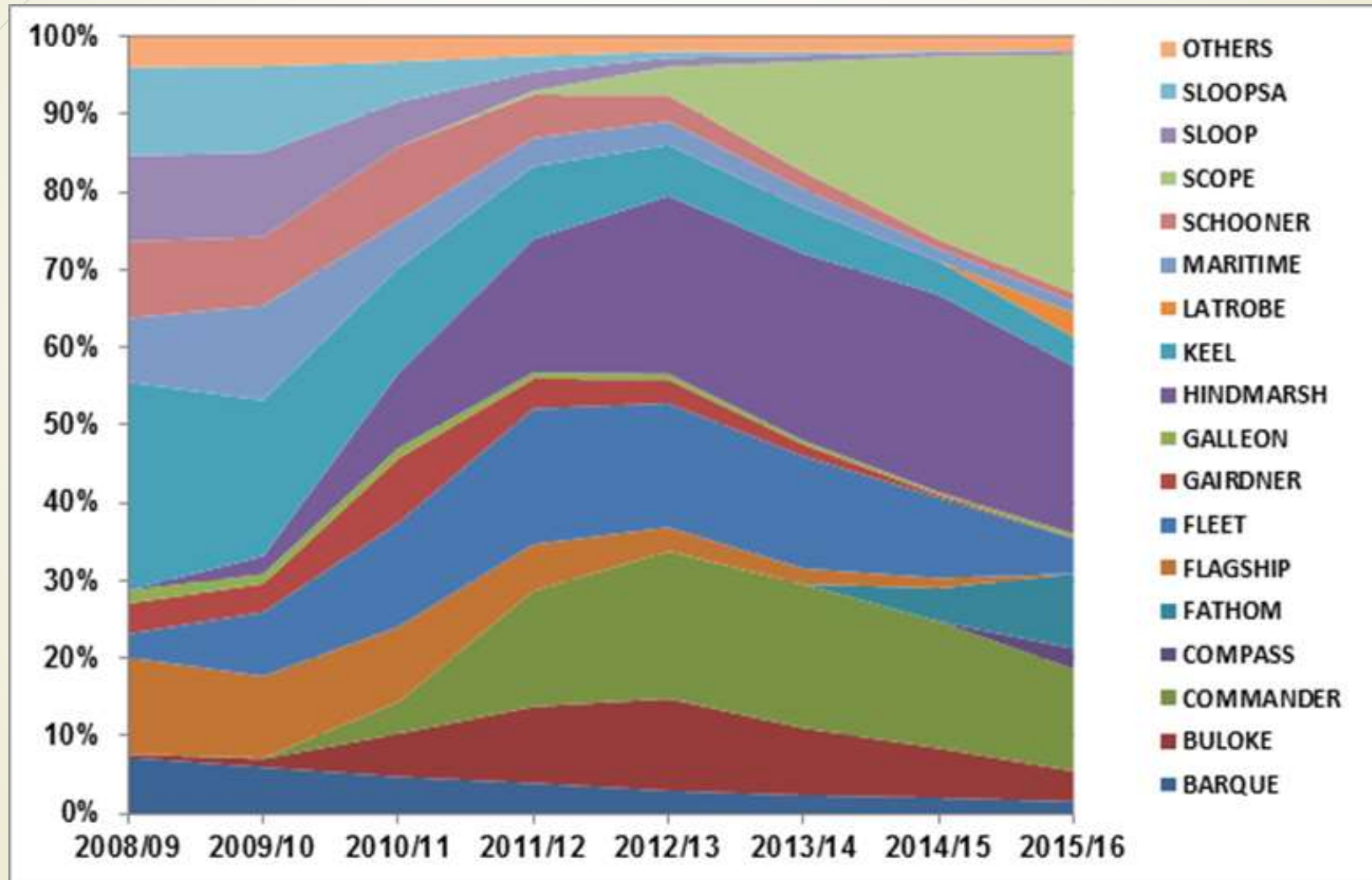
Compass Accreditation



- ▶ Parcel of 2014 Compass was selected for commercial trials based on receival testing
- ▶ When malted by Cargill it was found to be ~ 12.5% protein
- ▶ Barley Australia accreditation delayed until March 2018
- ▶ Independent of Barley Australia the trade has accumulated significant tonnages of Compass from 2015 for domestic and international brewing trials
- ▶ Market demand is based on accreditation/acceptance by individual customers


SA Variety Adoption

Data courtesy of Viterra





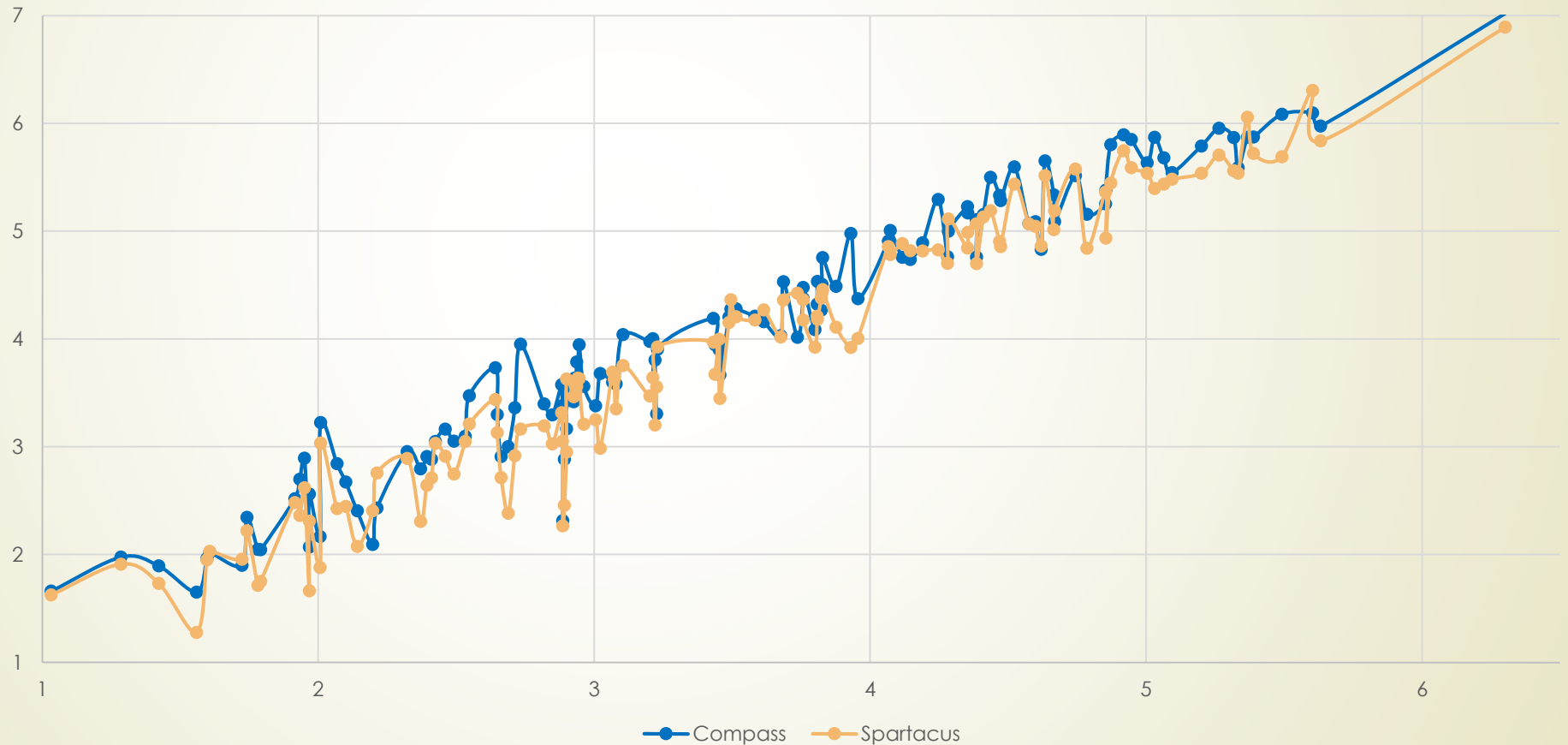
2015 South Australian NVT

- ▶ TOS from 8th to 28th May with most in mid May
 - ▶ Poochera sown 18th June
 - ▶ No foliar disease impact on trial results
 - ▶ 19 of the 20 trials returned statistically valid results
 - ▶ Cooke Plains data not released
 - ▶ Site mean yield ranged from 1.03 t/ha at Poochera to 4.74 t/ha at Bute
 - ▶ Mean grain yield across NVT was 2.88 t/ha, 22% lower than 2014
 - ▶ Mean screenings (% < 2.2mm) ranged from 2.7% at Wharminda to 56% at Bordertown
- 

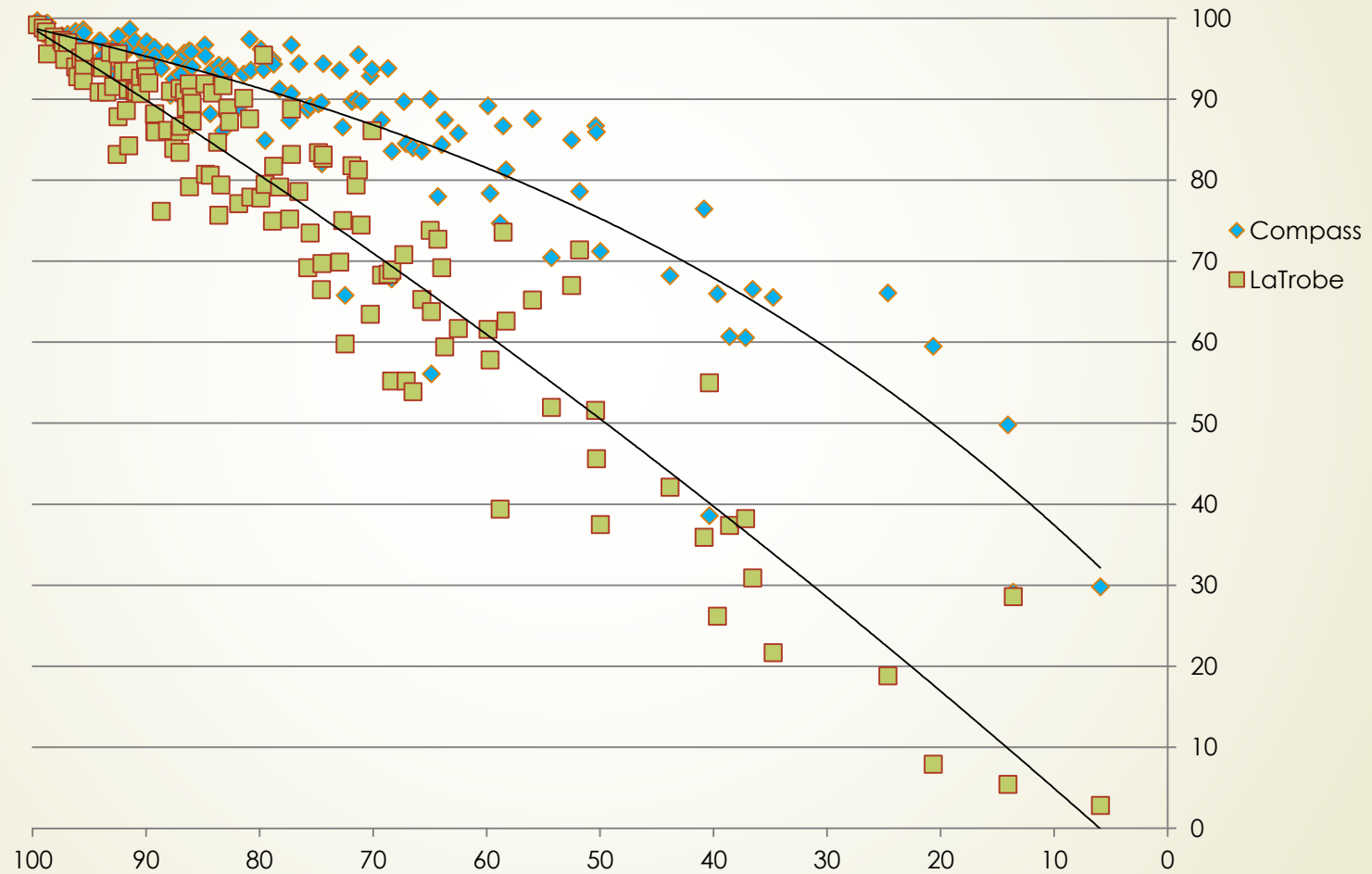
2015 Regional Mean Grain Yield Expressed as a Percentage of Site Mean

	UEP	LEP	YP	MN	MM*	SE
Feed						
Fathom	112	109	110	109	108	111
Rosalind	<u>126</u>	<u>114</u>	<u>115</u>	<u>119</u>	112	<u>137</u>
Malting & Food						
Commander	91	98	104	102	93	96
Hindmarsh	107	112	112	111	<u>113</u>	121
La Trobe	107	111	112	109	111	116
Scope	91	96	93	93	95	110
Under Accreditation						
Compass	111	<u>117</u>	<u>116</u>	113	<u>120</u>	<u>143</u>
Spartacus CL	<u>116</u>	<u>114</u>	114	<u>117</u>	107	129
SY Rattler	89	101	86	92	74	93
Number of trials	4	3	5	3	2	2
Site Mean (t/ha)	2.49	4.02	3.25	3.33	1.61	1.61

Compass & Spartacus CL – Long Term Analysis of SA NVT – 5% Difference



Plump Grain (% > 2.5 mm) from NVT



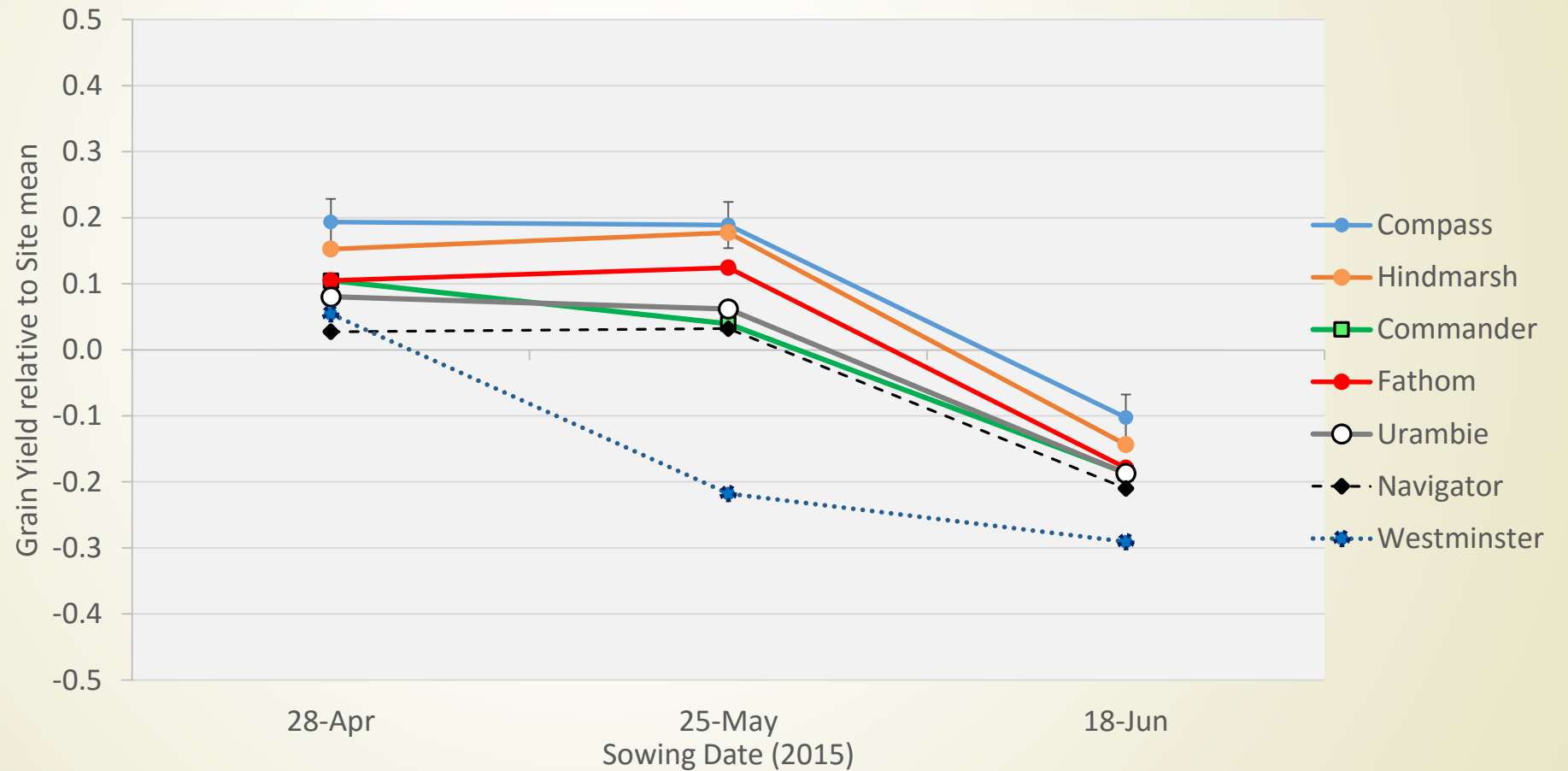
2015 Commercial Production Quality

Data courtesy of Viterro

Variety	Test Weight (kg/hl)	% Retention >2.5mm	% Screenings <2.2mm	% Protein
Compass	64.6	68.1	10.0	10.9
Commander	62.1	50.9	17.9	10.9
Hindmarsh	65.6	50.2	16.2	10.6
Fleet	61.3	54.0	13.0	11.1

Sowing Date Responses

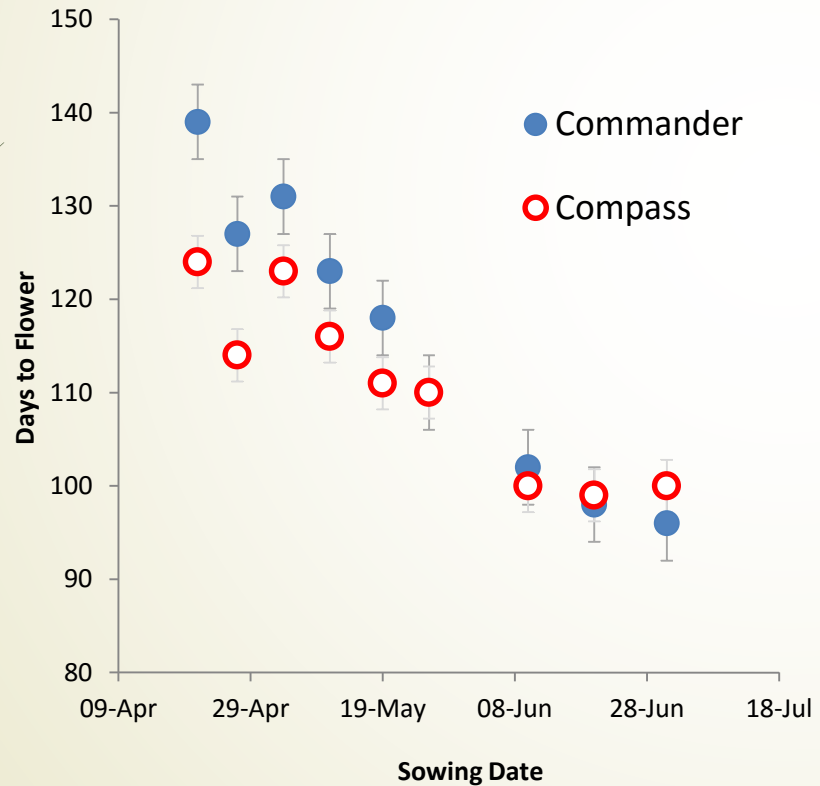
Data courtesy of Kenton Porker



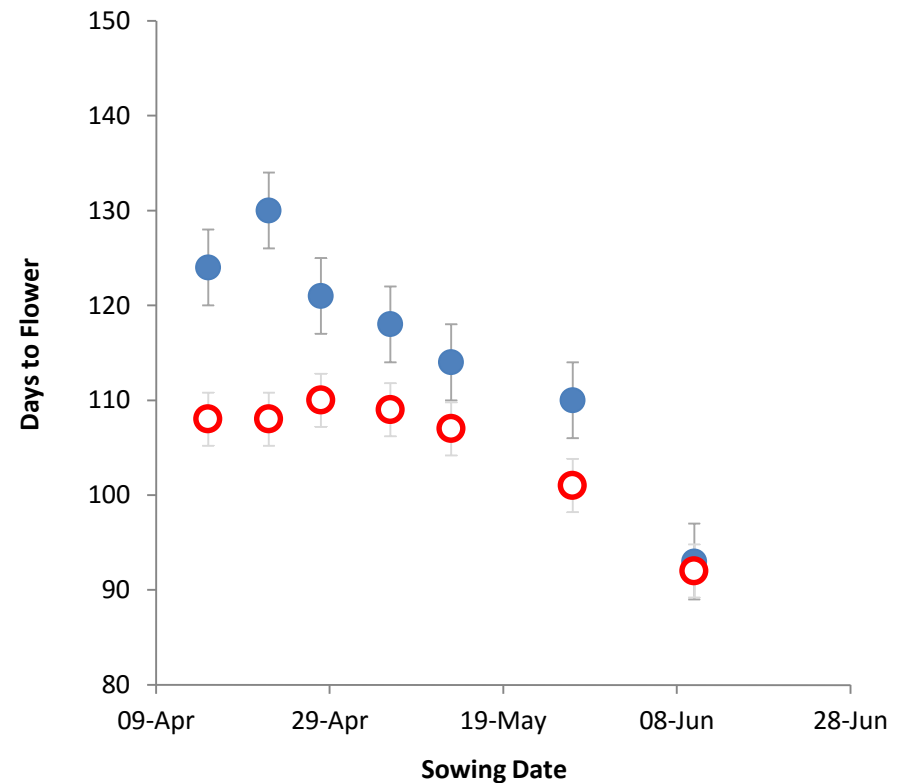
Compass Phenology

Data courtesy of Kenton Porker

Waite and Charlick

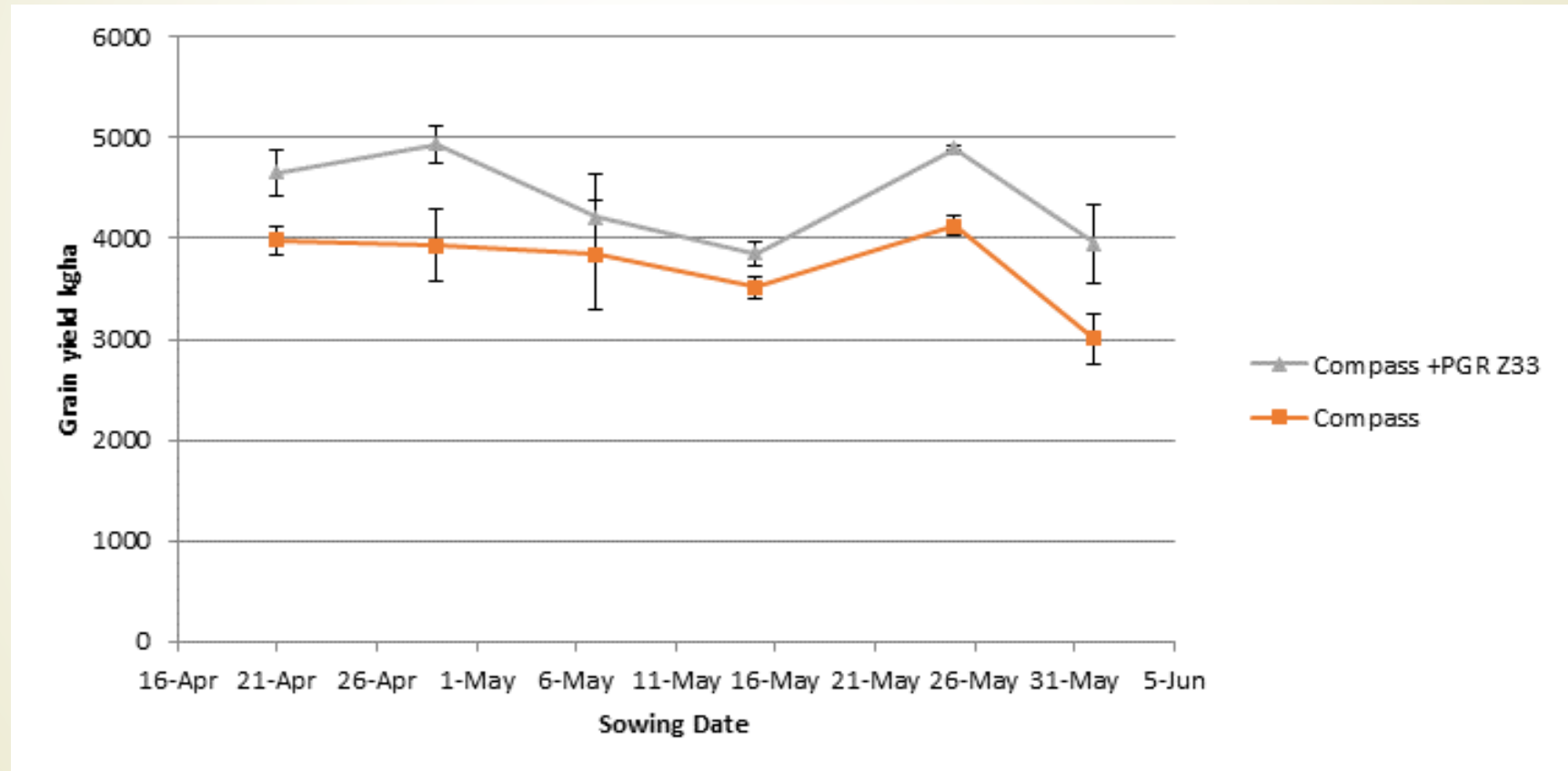


Loxton



Compass PGR Response

Data courtesy of Michael Zerner



- Commercially grown in 12 countries
- Approved by major global brewers
- Tested by UA since 2013
- HRZ NVT sites in 2014 and 2015
 - (EB1401)
- PBR Part 1 application accepted
- Initial commercial crops in 2016

Spring malting barley

EXPLORER

TO EXPLORE NEW TECHNOLOGIES

French Maltsters
Preferred Variety
& Brewers

➤ Excellent maltability (high friability, very low viscosity - Beta-glucan, ...)

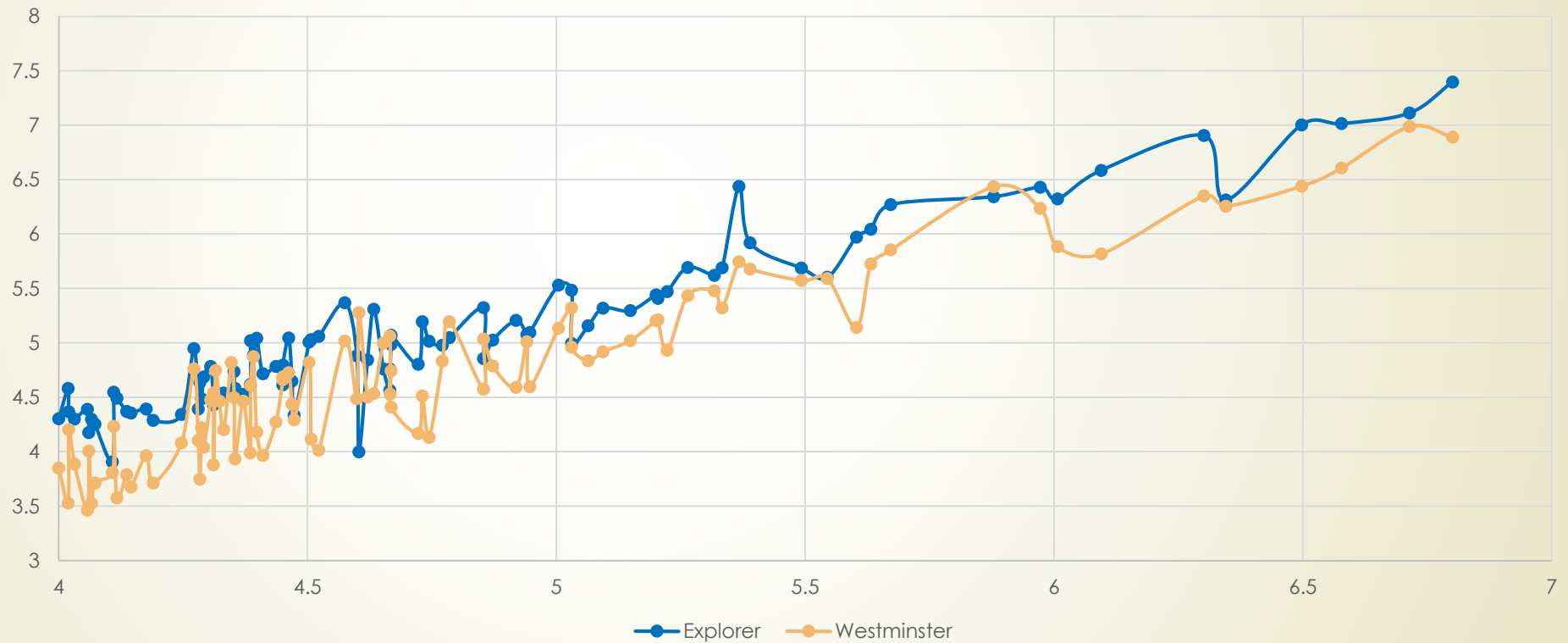
➤ Excellent brewing (very quick filtration)

➤ High yield

Breeder
SECOBRA
Recherches


Centre de Bois-Henry
78580 MAULE - France
Tel: +33 (0)1 34 75 84 40
Fax: +33 (0)1 30 90 76 69
www.secobra.com

In NVT > 4 t/ha Explorer Averages 7.2% Higher Yield than Westminster





Take Home Messages

- ▶ New varieties offer major gains
 - ▶ La Trobe – potential for higher prices than Hindmarsh
 - ▶ Spartacus CL – yield and grain size improvements over Scope CL
 - ▶ Compass – yield and benchmark grain size stability
 - ▶ Interrogate long term yield predictions for specific situations
 - ▶ In HRZ look for Explorer in NVT, agronomy and demo trials this year
 - ▶ Major changes in variety mix anticipated for 2016 harvest
 - ▶ Engagement with S&H grower meetings or silo committee Chairs important
 - ▶ New Coopers Malthouse under construction (50,000t demand)
- 



2016 Annual SANTFA Conference

